

PCM-26D2CA

2-Port Isolated CANBus mPCIe, CANOpen, DB9

NEW



iDoor CANopen RoHS COMPLIANT 2005/618/EC CE FCC

Features

- Meets Advantech Standard iDoor Technology
- PCI Express® Mini Card Specification Revision 1.2 compliant
- Supports Advantech CANOpen Protocol Library
- Operates two separated CAN networks simultaneously
- High speed transmission up to 1 Mbps
- I/O address automatically assigned by PCIe plug & play
- Supports 32/64-bit Windows 2000/XP/Vista/7, Linux 2.4/2.6
- Optical isolation protection of 2,500 V_{DC} ensures system reliability
- Includes Windows® DLL library and examples
- Supports Embedded Automation PC UNO-2200/2300/2400 series
- Supports Control DIN-Rail PC UNO-1200/1300/1400 series
- Supports Control Cabinet PC UNO-3200/3300/3400 series
- Supports Control Panel Computers TPC-xx81/xx82 series
- Supports Thin Client Panel Computers TPC-xx51 series

Introduction

The PCM-26 series is categorized as Industrial Communication with Fieldbus Protocol modules from Advantech iDoor Technology. They are all compatible with the PCI Express® Mini Card Specification Revision 1.2, including Isolated / Non-Isolated RS-232/422/485 communication cards for automation control, Wi-Fi/3G/GPS/GSM/LTE wireless communication models for data exchange during the management and machine level of automation application, Zigbee module as an IoT terminal or controller and PoE function for smart camera in detect inspection application of production. This is a flexible design that enables customers to customize their features which meet iDoor Technology.

Specifications

General

- **Bus Type** PCI Express Mini Card Revision 1.2
- **Certification** CE, FCC class A
- **Connectors** 2 x Male DB9
- **Dimensions** Module: 51 x 30 x 12.4 mm (2" x 1.18" x 0.49")
I/O Plate: 81 x 19.4 x 41 mm (3.19" x 0.76" x 1.61")
- **Power Consumption** Typical : +5V @ 400 mA

Communications

- **CAN Controller** NXP SJA-1000
- **CAN Transceiver** NXP 82C251
- **Protocol** CAN 2.0 A/B
- **Signal Support** CAN_H, CAN_L
- **Speed** 1Mbps
- **CAN Frequency** 16MHz
- **Termination Resistor** 120 Ohm (selected by jumper)

Protection

- **Isolation Protection** 2,500 V
- **ESD Protection** 15 KV
- **EFT Protection** 2,500 V
- **Surge Protection** 1,000 V_{DC}

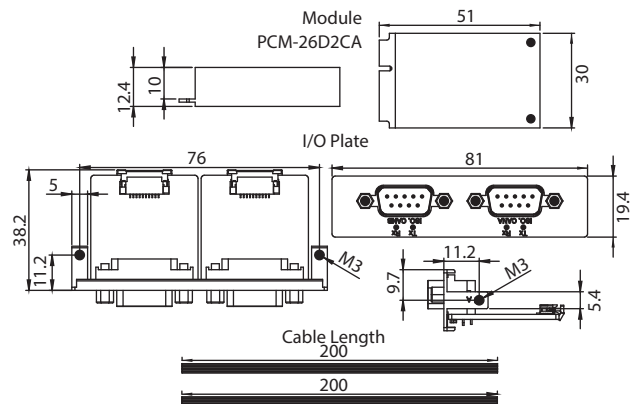
Software

- **CAN Bus Driver** Windows 2000/XP/Vista/7 (x86 and x64), Windows CE 5.0/6.0, Linux, QNX
- **CANopen Software** Windows 2000/XP/Vista/7 (x86 and x64), Windows CE 5.0/6.0

Environment

- **Humidity (Operating)** 5-95% RH, non-condensing
- **Operating Temperature** -20 ~ 60°C (-4 ~ 140°F)
- **Storage Temperature** -40 ~ 85°C (-40 ~ 185°F)

Dimensions



Ordering Information

- **PCM-26D2CA-AE** SJA1000 CANBus, CANOpen, DB9 x 2