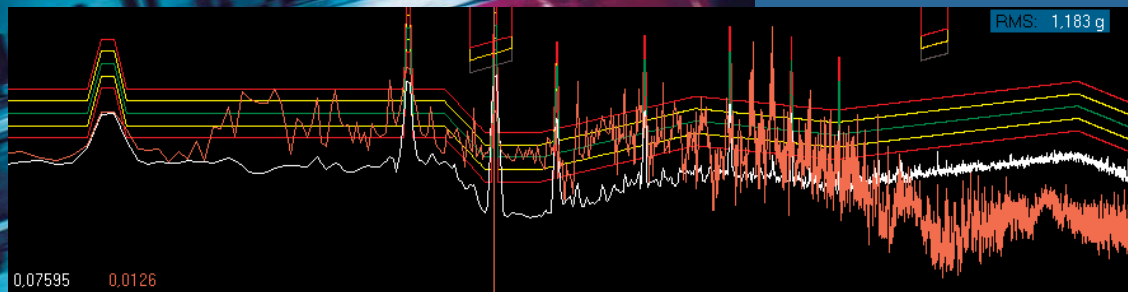


VibControl Revision 2.9

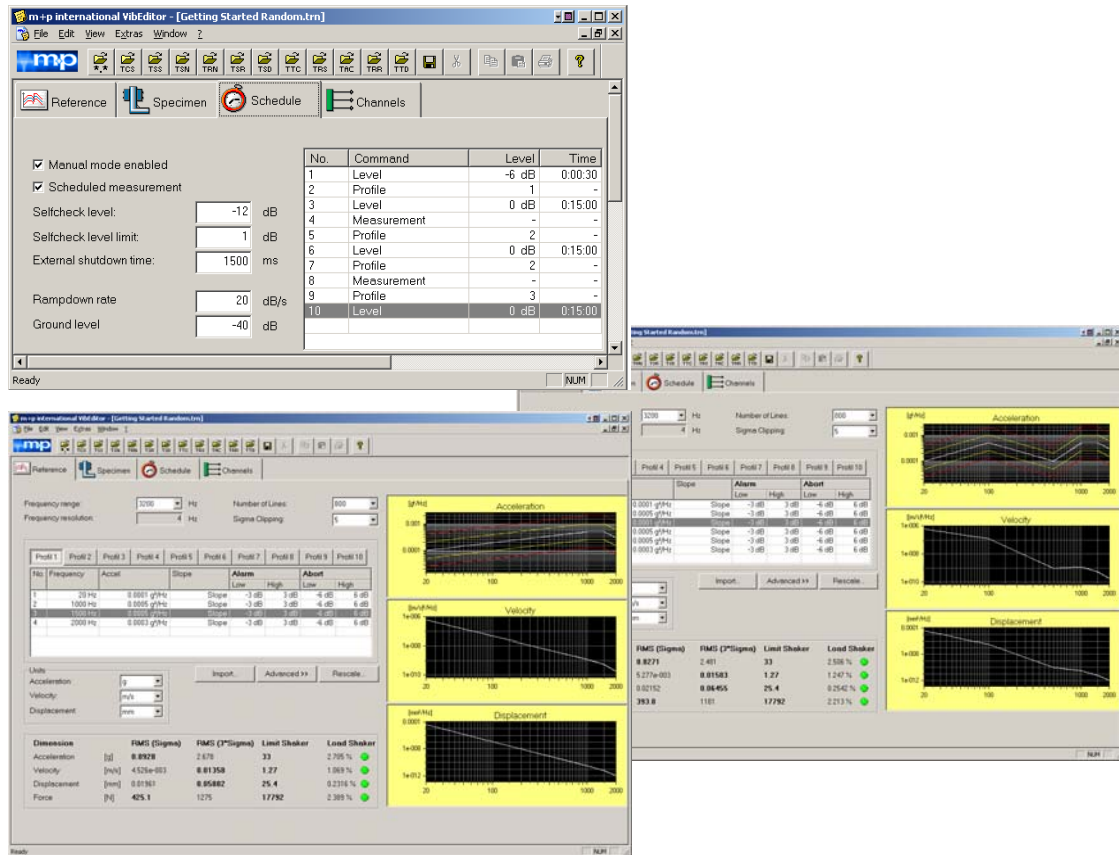
Update Note

- Mission Profiles in Random
- Multi-Monitor Function
- Test Status Window for Sine and Random
- VT1432B Input Card Support
- Auto Peak Search in VibPostTest



Mission Profiles in Random

The Mission Profiles feature enables you to define several excitation profiles in Random mode and to switch between the profiles without any delay.



Multi-Monitor Function

The online display capabilities of VibControl have been largely enhanced making monitoring of high-channel count systems quicker and easier. Now you can open up to 16 online graphics windows for 64 channels, operators of high-channel count systems can obtain all necessary information at a glance.

The channel information can also be observed on remote PCs without any measurement hardware connected.



If you need to observe more than

64 channels, you can expand the Multi-Monitor function to the Multi-Screen option. A system can be configured with the new Multi-Screen VibRunner module and a dual or quad graphics card for support of up to four monitors or 256 channels (if required, expandable to higher channel counts). Channel layouts for each monitor can be set up and stored for quick access.

Update Note

Multi-Mainframe Support in VibRecorder

In the VibRecorder Data Acquisition and Analysis System several mainframes can be connected via the MXI interface card enabling data acquisition, digital time recording and control up to and beyond 256 channels. The interface to the computer can be the IEEE-1394 FireWire interface or the new EX2500 Ethernet interface to operate the measurement hardware remotely.

VT1432B Input Card Support

VibControl Rev. 2.9 supports the high-speed VT1432B digitizer card from VXI Technology. This new 24-bit card extends the sampling per channel from 51.2 kHz - the capability of the VT1432A - to 102.4 kHz.

Test Status Window for Sine and Random

In VibRunner a separate status (monitoring) window can be opened and pulled to the desired size. This numerical display shows the current and the target value in Random and Sine mode. It enables the user to monitor the measurement values even if the operator is working at another workplace.

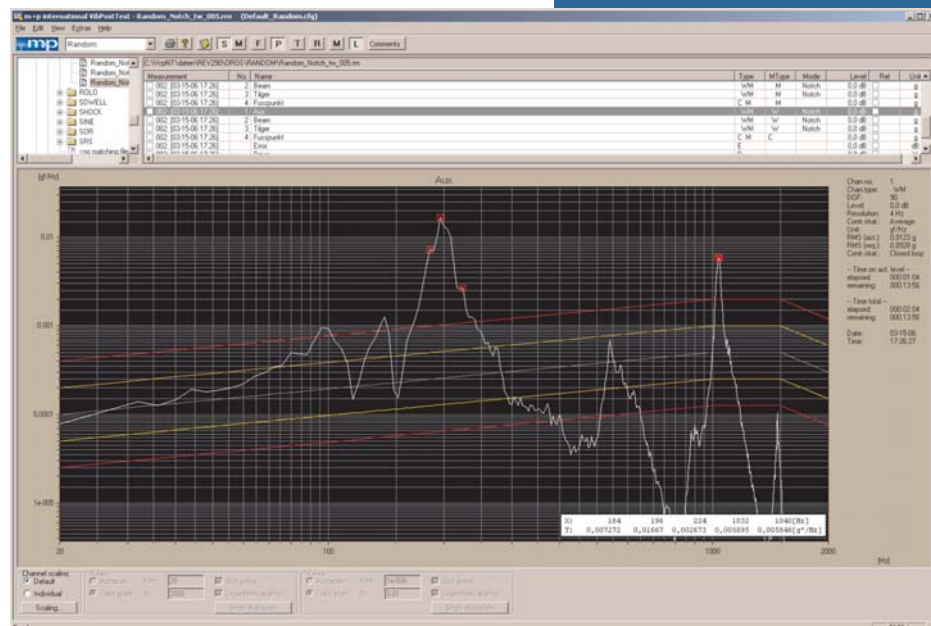


Improved Overload Handling

A new channel mode is available in Random. Monitor channels are exponentially averaged like the control channels but do not abort when an overload condition occurs. This helps avoid unnecessary test aborts from DC offsets and/or out of band energy.

Auto Peak Search in VibPostTest

In VibPostTest the Auto Peak Search has been significantly enhanced, allowing the user to select the Auto Peak Search function for several plots. The software identifies the peaks in each individual plot, checks the plots against the Auto Peak Search criteria, then switches between each plot as the software marks the respective peaks.



■ Rescale Spectrum with Target RMS Value

In Random test mode, the spectra can now be rescaled to a target g_{RMS} value along with dB. You only need to enter the target g_{RMS} value and the current spectrum will be rescaled accordingly.

■ Data Storage to Network Drives

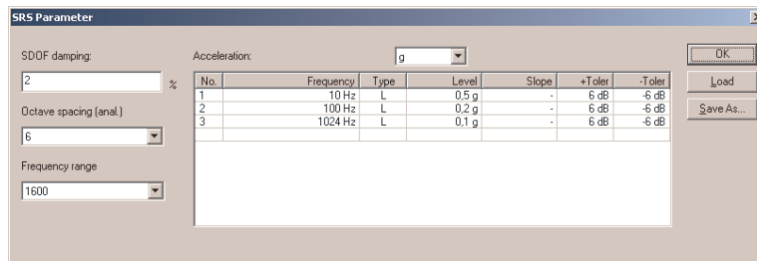
VibControl Rev. 2.9 offers an enhanced network capability. Result files can be written to any valid UNC network path.

■ History Table

The History function in VibPostTest is now available in both plot and tabular form. The History function provides information about which channel was in control during a notch/limiting test.

■ SRS Definition in Transient Capture Mode

SRS parameters can be directly defined in Transient Capture mode without importing an SRS file. This function is available in VibRunner and VibPostTest.



■ New EX2500 VXI Ethernet Card Support

The new VXI Technology EX2500 Ethernet Card is also supported in VibControl Rev. 2.9. Utilizing the industry standard Ethernet protocol available in most computers today, the measurement hardware can be controlled remotely over a greater distance than allowed by IEEE-1394 FireWire.

This Update Note provides you with an overview of the most significant product enhancements of the VibControl Revision 2.9. There are other new functions that make the VibControl system even more powerful and user-friendly.

The new software revision has resulted primarily from the close and valuable cooperation with you, our customers. We optimize our VibControl solutions continuously. Therefore, if you have any suggestions that could further improve our product offering, please let us know.

VibControl Revision 2.9 is available now. Please do not hesitate to contact us.

Germany

m+p international Mess- und Rechnertechnik GmbH
Phone: (+49) (0)511-85603-0
Fax: (+49) (0)511-85603-10
sales.de@mpihome.com

USA

m+p international inc.
Phone: (+1) 973 239 3005
Fax: (+1) 973 239 2858
sales.na@mpihome.com

Great Britain

m+p international (UK) Ltd
Phone: (+44) (0)1252 718822
Fax: (+44) (0)1252 718833
sales.uk@mpihome.com

France

m+p international Sarl
Phone: (+33) (0)130 157874
Fax: (+33) (0)130 157801
sales.fr@mpihome.com

Singapore

m+p international
Representative Office
Phone: ++65-9010-6478
Fax: ++65-6456-6609
sales.sg@mpihome.com