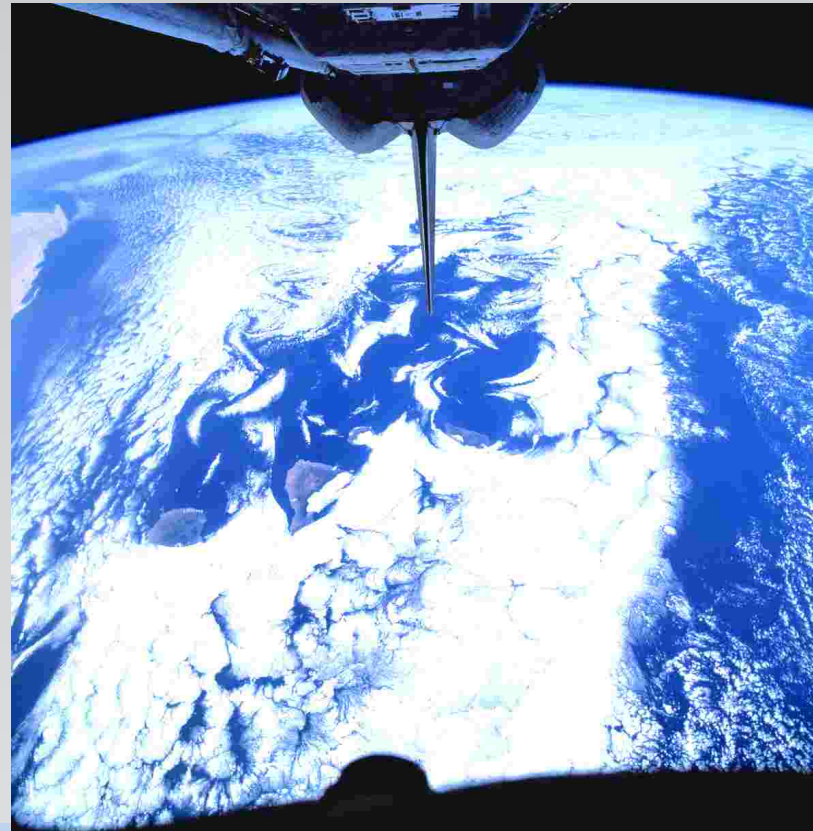


NEW

m+p international is a provider of test and measurement solutions for vibration control, noise and vibration analysis, emission testing, and process monitoring. Our VibControl products have turned m+p international to be one of the leading suppliers of vibration control systems.

TempControl, our new temperature chamber control system, adds additional functionality to our family of test and measurement solutions. TempControl has been developed in direct feedback from industry laboratories, ensuring the use of state-of-the-art technology required in daily practice.



TempControl

Temperature Chamber Control System

- Windows 2000/XP user interface
- Easy-to-use, user-orientated operation
- Multi-chamber control (manufacturer-independent)



m+p international, inc.
 271 Grove Avenue, Bldg. G
 Verona, NJ 07044-1705
 USA
 Phone: (+1) 973 239 3005
 Fax: (+1) 973 239 2858
 E-mail: sales@mpina.com
 www.mpina.com

**m+p international
 Mess- und Rechnertechnik GmbH**
 Freundallee 17
 30173 Hannover
 Germany
 Phone: (+49)-(0)5 11-85 60 3-0
 Fax: (+49)-(0)5 11-85 60 3-10
 E-mail: mpi@mpide.de
 www.mpide.de

m+p international (UK) Ltd
 1, Gardeners Hill Road
 Farnham, Surrey
 GU10 4RL, England
 Phone: (+44) (0)1252 795867
 Fax: (+44) (0)1252 795867
 E-mail: info@mpiuk.co.uk
 www.mpiuk.co.uk

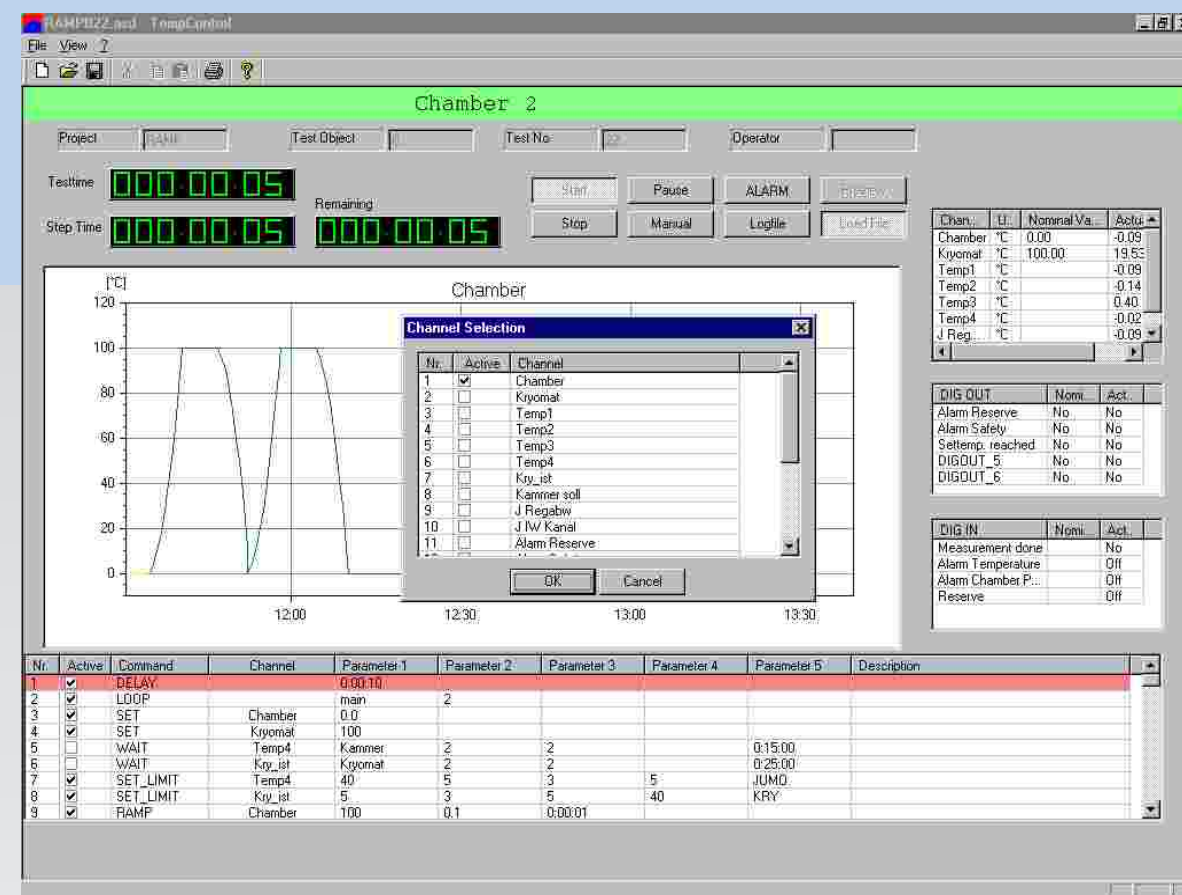


TempControl

Temperature Chamber Control System

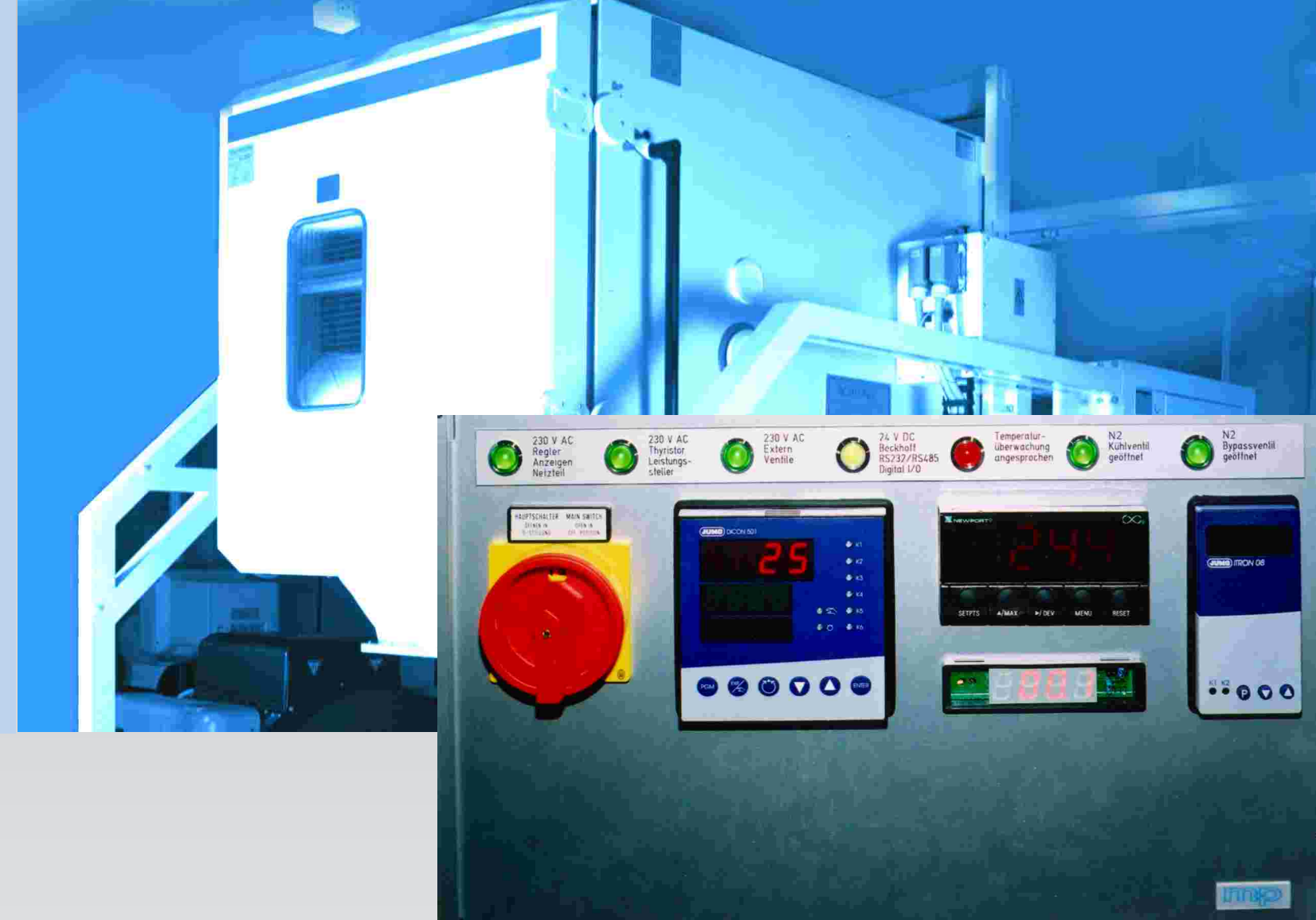
Mechanical and electrical components utilized in satellites, planes and cars are frequently exposed to extreme temperatures and large temperature gradients both in terms of time and location. This effect, sometimes in combination with mechanical vibrations, often puts high loads on these components and can easily result in component failure.

Industry laboratories are increasingly using environmental chambers to supplement conventional vibration control equipment (such as m+p international's VibControl products). With TempControl, m+p international now offers a powerful, easy-to-use tool for temperature chamber control that has been developed in close cooperation with leading test laboratories:



TempControl user interface

- **User Interface**
Intuitive user interface based on Windows 2000/XP for one or several chambers (irrespective of manufacturer)
- **Process Control**
Process control by means of easily created scripts (table-based commands)
- **Modifications**
Process modification during the test run whenever needed
- **Skipping**
Skipping of program parts, program start selectable at any point
- **Interfaces**
Triggering of user-selected (open) interfaces and multiple devices
- **Analog and digital signals**
Field bus modules allow for input and output of additional analog or digital signals (monitoring, valve control, etc.)



Hardware with controllers and displays in a 19" rack

- Easy creation of procedures with loops and functional commands.
- Remote monitoring and control via network or modem.
- User-selected switching between manual and automatic operation.
- Logfile for verification and documentation.
- User-defined upper and lower alarm and abort limits, event-based monitoring, emergency program for controlled abort.
- Display of loop counter and remaining time.
- Operation with maximum or time-limited temperature gradient.
- Triggering of low-temperature cooling devices (cryomats).
- Direct triggering of liquid nitrogen cooling systems and bypass valves.
- As an option, delivery of the complete control hardware, including controllers, heat transformers, and signal front-end.