

SO Analyzer

Structural Acquisition and Analysis

The Structural Dynamics package is part of m+p international's SO Analyzer for noise & vibration measurements and analysis that provides a complete set of tools for observing, analysing and documenting the vibrational behaviour of machines and mechanical structures. It includes modules for classical modal analysis, impact and multiple input/multiple output (MIMO) acquisition as well as for ODS, SDOF and MDOF analysis. A modal model validation module is also available.

The SO Analyzer Structural software makes it very simple to create the structure's geometry and calculate modal parameters including mode shape animation. The experimental modal data (frequency, damping and mode shape) are obtained by curve fitting a set of FRF (Frequency Response Function) measurements. FRFs can be directly measured or calculated from time records automatically. FRFs and time records can also be imported from other systems. Structural Dynamics Modifications and FE model correlation and updating are further optional tools.

Key Features

Standard Structural Bundle

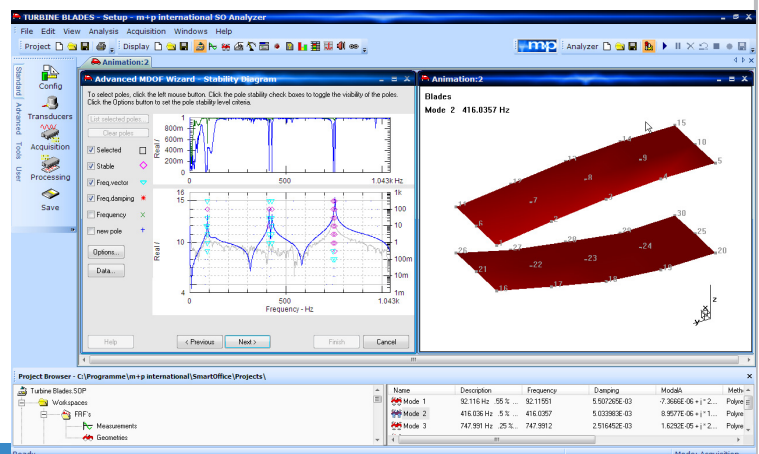
- Data collection, analysis and reporting in one package
- Impact (modal hammer) data acquisition
- Creation of component based geometries
- ODS (Operating Deflection Shape) analysis
- Interface to FEMtools for SDM analysis (optional)
- Correlation/updating between experimental and Finite Element Analysis data (optional)
- MS Windows like user interface
- Intelligent wizards for easy and safe user guidance
- Copy&paste to ActiveX applications like MS Word and PowerPoint
- Free installation of the SO Viewer to actively view/analyze data like an animation display on any MS Windows/Office PC

Advanced Structural Bundle includes all Standard Structural features plus:

- Advanced modal analysis
- SDOF (Single Degree of Freedom) analysis
- MDOF (Multiple Degree of Freedom) analysis
- Operating modal analysis
- Modal model validation (MAC graph and table)

Structural Add-Ons

- MIMO (Multiple Input/Multiple Output) analysis including multi-source outputs
- Stepped sine online analysis
- Sine reduction analysis



Applications

- Analysis of structural dynamics in the automotive, aerospace, defense, consumer and other industries
- Experimental modal analysis
- Fixture analysis for environmental vibration test (for MILSTD 810F)
- Vibrational troubleshooting
- Structural Dynamics Modifications
- FE Model Validation and Updating

Overview

The Windows-based Structural software uses intelligent wizards which, step by step, guide you through the process of performing a modal acquisition and analysis. Graphs and mode shapes can be directly copied and pasted into ActiveX compliant applications such as Microsoft Word or PowerPoint. Once imported into these applications, all SO Viewer properties such as data rescaling, reformatting, animating, etc. stay active. The SO Viewer can be installed on any PC at no extra cost.

A data interface is available between the SO Analyzer and the FEMtools software of DDS Corporation. FEMtools also interfaces to all popular FE analysis software packages. It has modules for pre-test analysis, SDM (structural dynamics modifications) analysis, correlation analysis and FE model validation and updating. More information is available at www.femtools.com.

Impact Data Acquisition

Impact testing includes useful tools like the selection of a roving hammer or transducer, selection of data points/nodes, double impact detection and rejection, definition of force and exponential window and a user-definable display configuration as a visual measurement feedback.

The combination of automatic DOF/node scheduling, automatic rejection of invalid measurements and automatic saving of data after a user-defined interval virtually eliminates all keyboard interaction. This is helpful for impact testing on large structures or at locations that are difficult to access.

- Unlimited and freely definable list of user-specific header information (metadata) for annotation, data retrieval, sorting and reporting
- Simple parameter entry for the channels in tables including engineering units, transducer calibration data and inputs
- Channel type: excitation, response, inactive; DC or AC coupled; input range, offset, pregain, acoustical weighting; FIR weighting filters hand, arm, body, user defined
- Channel input: V, ICP, Charge
- Enter transducer calibration data or import from Excel
- Roving hammer or roving transducer mode
- Easy selection of measurement points (nodes) and directions
- Acquisition setup: sample rate or useful bandwidth, blocksize, arming
- Level trigger and pretrigger view
- Data processing/data storage: time record, spectrum, PSD, average PSD, cross-PSD, average cross-PSD, FRF, coherence; linear averaging
- Windows: uniform, force, exponential; force width and exponential end in %
- Automatic detection and rejection of double impact measurements
- Automatic, hands-off stepping through measurement points (nodes) and storage of averaged results during acquisition
- User-definable displays for impact pulse, PSD, FRF/Coherence etc.
- Save and recall measurement and display setups

Geometry Creation

Component based geometries for ODS/modal analysis can be created in a simple step-by-step approach. The steps are to define the components, describe them with nodes and draw lines and surfaces. Geometries can also be imported as UNV/UFF files and from most CAD packages via STL format.

- Rectangular, cylindrical or spherical coordinate systems
- Components can be displayed in different colours
- Rotate components around the X, Y and Z axis
- Arbitrary node names
- A node can be a slave to one or two other master nodes
- Enter sensor/node direction as a rotation around the X, Y and Z axis
- Draw lines and surfaces with the mouse, or by entering node data in a table
- Rotate, resize and move the geometry while drawing
- Geometry tables can easily be imported from and exported to Excel for enhanced processing capability

Operating Deflection Shape (ODS) Analysis

The operating deflection shape (ODS) analysis is used to visualize how a structure vibrates under steady-state operating conditions. Unlike modal analysis, knowledge of the input forces is not required.

The source of the data for the analysis can be time, spectra, crosspower or FRF measurements. A geometry and corresponding measurement data are the only prerequisites for an ODS analysis. Any measurement can easily be referenced to a node by a simple header entry. Measurement data and geometry are then displayed together allowing immediate animation of an ODS at any discrete frequency, or over a frequency sweep. While the structure is animated, there is access to tools for selecting the data being displayed, storing a mode, moving through the data or searching for the "next" peak in the data.

- ODS in frequency and time domain
- Automatic check for missing data
- Online display of ODS for cursor selected frequency
- Manual cursor placement or automatic sweep, adjustable sweep speed
- Automatic cursor peak finding for ODS storage

Modal Analysis¹⁾

Both SDOF (Single Degree of Freedom) and MDOF (Multiple Degree of Freedom) analysis use FRFs to calculate the modal parameters (natural frequencies, damping and mode shapes) of the structure. The SDOF analysis steps are identical to those of the ODS analysis. However, the SDOF analysis uses the quadrature or finite difference methods to estimate the modal parameters.

The MDOF wizard handles the most sophisticated modal analysis tasks like detecting repeated or closely spaced modes. It takes the user through a simple series of steps to complete the analysis and also makes intelligent estimates of all analysis options so even an inexperienced operator can produce a reliable result whereas the experienced user can easily fine tune his result for the most difficult analysis situations.

The SDOF and MDOF wizards include the option of processing operational modal data. This is for cases where a structure is self-excited or where input forces are not known. Applications include automotive testing using road loading, bridges using traffic passing, shakers using random or swept sine inputs etc. Typically, a set of cross power measurements replace the FRFs and are processed using accepted assumptions about the forcing function input. Compared to ODS which simply creates a modal shape animation this technique handles closely coupled modes and computes full frequency and damping results for FEM validation and tuning.

- FRFs: acceleration/force, velocity/force, displacement/force
- SDOF: finite difference and quadrature algorithms
- MDOF: polyreference time domain method for extracting poles and modal participation factors; multi-reference least squares frequency domain method to estimate the modal vectors; multivariate and power spectrum summation mode indicators
- Select data, references and directions for the analysis process
- Automatic checking for missing data
- Select frequency range, data being displayed and mode indicator function
- Determine the modal order and the overdetermination factor
- Stability diagram: set the tolerance of the stability parameters and select poles
- Synthesis and shape animation: view and save selected mode shapes
- Wizard guides through the analysis process and greatly facilitates it by limiting the choices to be made
- Validation including MAC, mode participation and mode scaling
- Operational modal analysis

Multiple Input/Multiple Output (MIMO) Analysis²⁾

The Multiple Input/Multiple Output (MIMO) module measures the crossfunctions of all responses versus all excitations and checks the correlation of multiple inputs by displaying the eigenvalues of the input crosspower. The results are the Principal Input Spectra indicating the number of uncorrelated physical inputs. Acquiring data with multiple inputs requires that the inputs are uncorrelated with one another.

- Unlimited and freely definable list of user-specific header information (metadata) for annotation, data retrieval, sorting and reporting
- Simple parameter entry for the channels in tables including engineering units, transducer calibration data and inputs
- Channel type: excitation, response, inactive; DC or AC coupled; input range, offset, pregain, acoustical weighting; FIR weighting filters hand, arm, body, user defined
- Channel input: V, ICP, Charge
- Enter transducer calibration data or import from Excel
- Source modes: random, burst random, periodic random, sine, stepped sine, burst sine, chirp, sine sweep, multiple level controlled fixed/swept sine and random
- Source parameters: level, bandwidth, burst %, sine frequency, sine phase, ramp time
- Acquisition setup: sample rate or useful bandwidth, blocksize, arming
- Trigger modes: freerun, source, channel, pos./neg. slope, zone entry/exit; level, pretrigger view up to 100%
- Data processing: principal input spectra, time record, spectrum, autopower, crosspower, PSD, cross-PSD, FRF, coherence, autocorrelation, crosscorrelation, histogram, probability distribution, probability density, impulse response
- Averaging: none, linear, exponential
- Windows: uniform, hanning, hamming, flattop, exponential; exponential end in %
- Autoranging: instant graphical feedback, automatic/manual ranging, range up only
- Overload handling: ignore, retry or break
- Save and recall measurement and display setups
- Calibration: calibrate transducers

¹⁾ included in SO-2202 add-on

²⁾ included in SO-2203 add-on

Swept and Stepped Sine Analysis³⁾

Both swept sine and stepped sine analysis modules are available. Compared to random excitation modes these single frequency excitation modes offer improved signal to noise analysis, the ability to analyse non-linear effects and user control over structural settling times for improved mode identification.

- Entry of start frequency, end frequency, frequency step or sweep rates
- User selection of step delay, averaging and tracking filter bandwidth
- Data processing/data storage: FFT spectra, autopower spectra, crosspower spectra, FRF, coherence
- Modal analysis using the SDOF and MDOF functions

Viewers/Post-Processing

2D Viewer⁴⁾

Animation Viewer

- Unlimited number of displays, up to 4 views (x, y, z-axis, selectable) per display
- Rotate, resize, move the geometry
- Solid or wireframe view
- Undeformed or animated view
- Animation speed and amplitude selectable, or manual stepping
- Node measurement direction view
- Geometry component colour selection

Post-Processing

- Data import/export⁴⁾
- All processing can be done from imported time domain signals
- Unlimited open workspaces
- Drag/drop data combining from open workspaces
- Advanced calculator for non-standard calculations

Operating System

- Microsoft Windows XP/Vista/7

SO Analyzer is a product of m+p international.
All trademarks and registered trademarks are the property of their respective holders.
Specifications subject to change without notice.

www.mpihome.com



INTERNATIONAL

listens to customers ...

70914/05-10/100

³⁾ included in SO-2401 and SO-2402 add-ons

⁴⁾ see the m+p international e-Reporter Product Information

Germany: m+p international GmbH · Phone: (+49) (0)511-85603-0 · Fax: (+49) (0)511-85603-10 · sales.de@mpihome.com

USA: m+p international inc. · Phone: (+1) 973 239 3005 · Fax: (+1) 973 239 2858 · sales.na@mpihome.com

Great Britain: m+p international (UK) Ltd · Phone: (+44) (0)1420 521222 · Fax: (+44) (0)1420 521223 · sales.uk@mpihome.com

France: m+p international Sarl · Phone: (+33) (0)130 157874 · Fax: (+33) (0)139 769627 · sales.fr@mpihome.com

China: Beijing Representative Office of m+p international · Phone: (+86) 10 8283 8698 · Fax: (+86) 10 8283 8998 · sales.cn@mpihome.com